

# COBBLESTONE

*Living*

ELEVATE  
*your* EVERYDAY

JEWELRY



FALL 2024

ELEVATE YOUR EVERYDAY...

We believe that  
every day is an  
opportunity to  
elevate your  
experiences  
through your  
personal style.

... WITH COBBLESTONE LIVING

## NEW SPRING ARRIVALS...



### Fresh Colorways

Our pavé stone styles feature simulated stones in emerald, diamond, and pink diamond hues—perfectly complemented by silver and gold metal tones and freshwater pearls.



### Stackable Style

Each piece in our stackable jewelry assortment is inspired by a timeless style, designed to mix and match in gorgeous bracelet, necklace, and earring stacks.



### Elevated Essentials

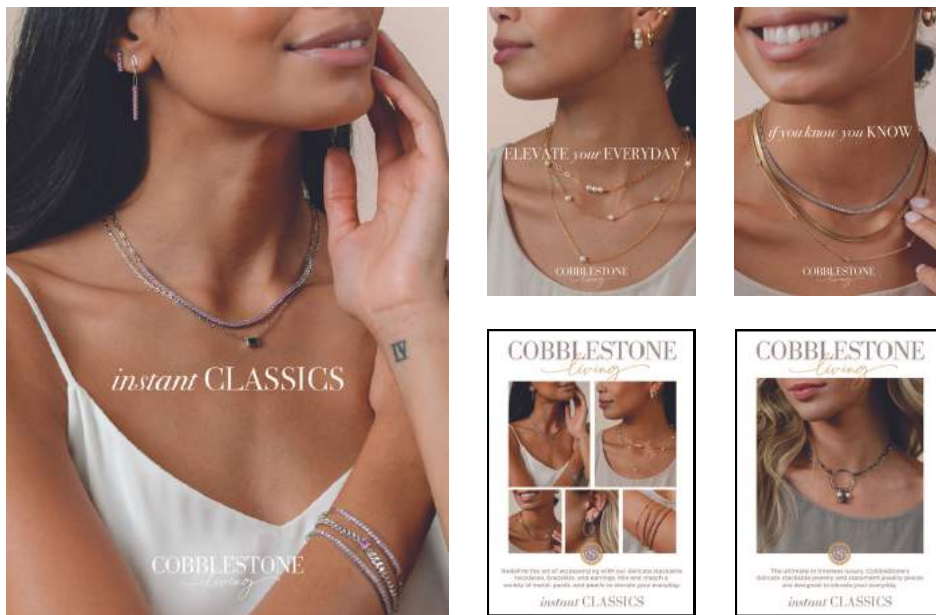
Your customers will enjoy building their everyday jewelry foundation with our elegant yet approachable essentials, which offer a premium look without the hefty price tag.

...FOR ELEGANT ADVENTURES



## MARKETING RESOURCES...

Engage your customers with storytelling using our seasonal signage, available for purchase (5"x7" Signs = \$6, 10"x14" Signs = \$7). Take advantage of our vast digital library, with free images, signage, and graphics you can download for in-store and online marketing.



...AT YOUR FINGERTIPS

# PAVÉ JEWELRY



Redefine the art of accessorizing with our stackable pavé necklaces, bracelets, and earrings. In multiple metal finishes and boasting a variety of stone colors—including quietly luxe Tennis styles—you can mix, match, and stack to bring a personalized, layered touch to your everyday ensemble.





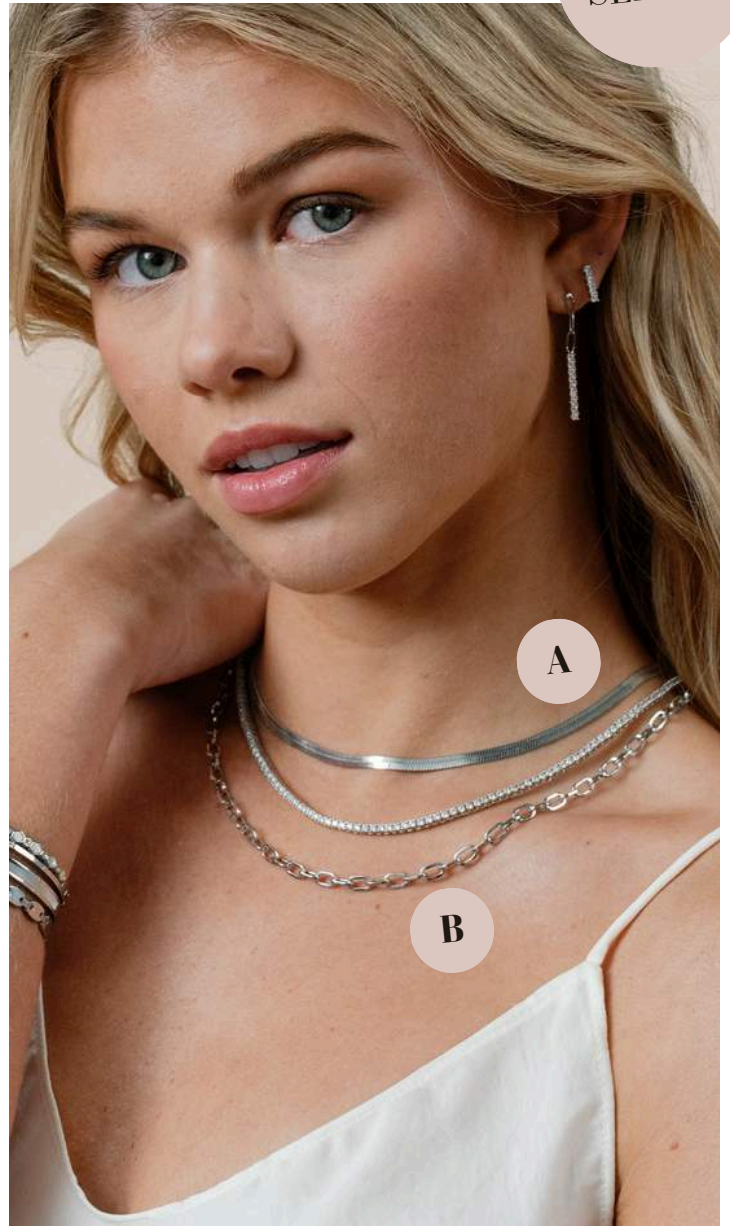
# EUGENIE

## PAVÉ TENNIS NECKLACE

Luxury meets its match in the Eugenie Tennis Necklace, meticulously crafted with hand-set 2mm simulated stones and a classic tennis clasp. Inspired by the opulent style of Princess Eugenie and her renowned collection of stately jewels, this necklace radiates sophistication, offering a touch of regal allure to any outfit.

Simulated Diamond/Gold (EUGEN-GO), Simulated Diamond/Silver (EUGEN-SI) | \$39

**BEST  
SELLER**



Paired with : A) Rosalind Necklace (\$14)

B) Eva Necklace (\$14)



# ELIZABETH

## PAVÉ TENNIS PAPERCLIP NECKLACE

The Elizabeth Pavé Tennis Paperclip Necklace encompasses the best of both worlds: half classic tennis necklace, half modern paperclip chain.

Simulated Emerald/Gold (ELIZAB-GEM), Simulated Diamond/Gold (ELIZAB-GCZ),  
Simulated Pink Diamond/Gold (ELIZAB-GLP), Simulated Emerald/Silver (ELIZAB-SEM),  
Simulated Diamond/Silver (ELIZAB-SCZ), Simulated Pink Diamond/Silver (ELIZAB-SLP) | \$21



Simulated Pink Diamond/Gold



Simulated Diamond/Gold



Simulated Emerald/Gold



Simulated Emerald/Silver



Simulated Diamond/Silver



Simulated Pink Diamond/Silver





# EZRA

## PAVÉ CHAIN NECKLACE

The Ezra Pavé Chain Necklace showcases one gleaming stone on a graceful chain, a brilliant accent for your daily necklace stack.

Simulated Emerald/Gold (EZRA-GEM), Simulated Diamond/Gold (EZRA-GCZ), Simulated Pink Diamond/Gold (EZRA-GLP), Simulated Emerald/Silver (EZRA-SEM), Simulated Diamond/Silver (EZRA-SCZ), Simulated Pink Diamond/Silver (EZRA-SLP) | \$14



Simulated Emerald/Gold



Simulated Diamond/Gold



Simulated Pink Diamond/Gold



Simulated Emerald/Silver



Simulated Diamond/Silver



Simulated Pink Diamond/Silver

# ELEANOR

## PAVÉ CHAIN NECKLACE

Graceful pavé stones accent a delicate chain on our Eleanor Pavé Chain Necklace, the perfect accent for your daily necklace stack.

Simulated Emerald/Gold (ELEAN-GEM), Simulated Diamond/Gold (ELEAN-GCZ),  
Simulated Pink Diamond/Gold (ELEAN-GLP) | \$18



Paired with :

A) Rosalind Necklace (\$14) B) Elizabeth Necklace (\$21)



# EUGENIE

## PAVÉ TENNIS BRACELET

Our Eugenie Pavé Tennis Bracelet features hand-set 2mm simulated stones and a classic tennis clasp.

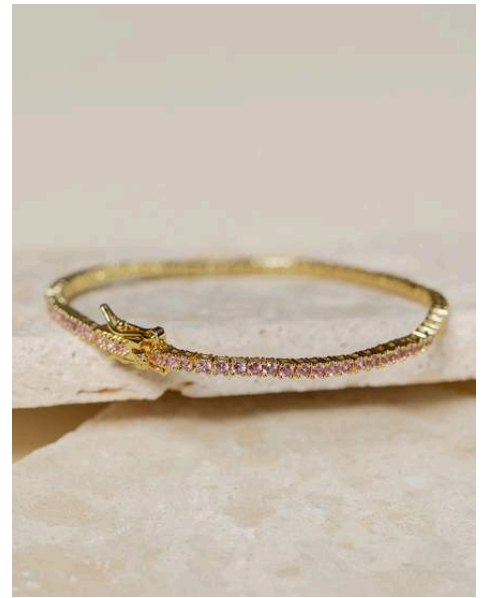
Simulated Emerald/Gold (EUGE-GEM), Simulated Diamond/Gold (EUGE-GCZ),  
Simulated Pink Diamond/Gold (EUGE-GLP), Simulated Emerald/Silver (EUGE-SEM),  
Simulated Diamond/Silver (EUGE-SCZ), Simulated Pink Diamond/Silver (EUGE-SLP) | \$24



Simulated Emerald/Gold



Simulated Diamond/Gold



Simulated Pink Diamond/Gold



Simulated Emerald/Silver



Simulated Diamond/Silver



Simulated Pink Diamond/Silver



# ELIZABETH

## PAVÉ TENNIS PAPERCLIP BRACELET

The Elizabeth Pavé Tennis Paperclip Bracelet encompasses the best of both worlds:  
half classic tennis bracelet, half modern paperclip chain.

Simulated Emerald/Gold (ELI-GEM), Simulated Diamond/Gold (ELI-GCZ),  
Simulated Pink Diamond/Gold (ELI-GLP), Simulated Emerald/Silver (ELI-SEM),  
Simulated Diamond/Silver (ELI-SCZ), Simulated Pink Diamond/Silver (ELI-SLP) | \$16



Simulated Emerald/Gold



Simulated Diamond/Gold



Simulated Diamond/Gold



Simulated Emerald/Silver



Simulated Diamond/Silver



Simulated Pink Diamond/Silver



# EVIE

## PAVÉ CHAIN BRACELET

Our Evie Pavé Chain Bracelet showcases one gleaming stone flanked by a bold Cuban chain, designed to ground your bracelet stack.

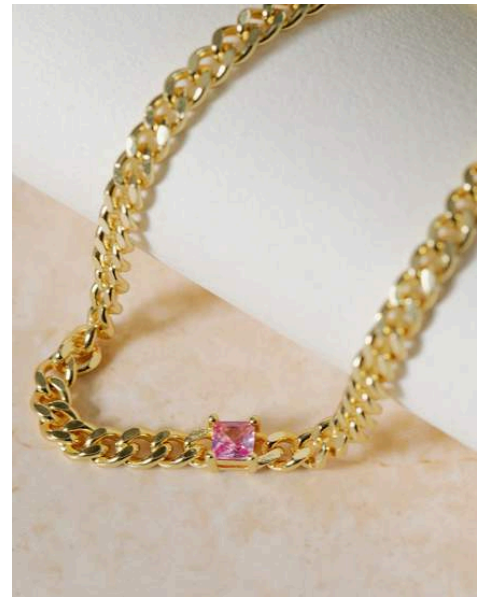
Simulated Emerald/Gold (EVIE-GEM), Simulated Diamond/Gold (EVIE-GCZ),  
Simulated Pink Diamond/Gold (EVIE-GLP), Simulated Emerald/Silver (EVIE-SEM),  
Simulated Diamond/Silver (EVIE-SCZ), Simulated Pink Diamond/Silver (EVIE-SLP) | \$14



Simulated Emerald/Gold



Simulated Diamond/Gold



Simulated Pink Diamond/Gold



Simulated Emerald/Silver



Simulated Diamond/Silver



Simulated Pink Diamond/Silver

Paired with :  
A) Eugenie  
Bracelet (\$24)  
B) Elizabeth  
Bracelet (\$16)

Paired with :  
C) Eugenie  
Bracelet (\$24)  
D) Elizabeth  
Bracelet (\$16)



# ELEANOR

## PAVÉ CHAIN BRACELET

Graceful pavé stones accent a delicate chain on our Eleanor Pavé Chain Bracelet, the perfect accent for your daily bracelet stack.

Simulated Emerald/Gold (ELEA-GEM), Simulated Diamond/Gold (ELEA-GCZ),  
Simulated Pink Diamond/Gold (ELEA-GLP) | \$10



Simulated Emerald/Gold



Simulated Diamond/Gold



Simulated Pink Diamond/Gold



Paired with :

A) Eugenie Bracelet (\$24) B) Elizabeth Bracelet (\$16)

C) Evie Bracelet (\$14)

orders@cobblestone-living.com



# EMILY

## PAVÉ BANGLE BRACELET

Evenly spaced pavé stones dot the Emily Pavé Bangle Bracelet, a lovely piece to pair with other metal or pavé bracelet styles.

Simulated Emerald/Gold (EMIL-GEM), Simulated Diamond/Gold (EMIL-GCZ),  
Simulated Pink Diamond/Gold (EMIL-GLP) | \$18

*Paired with :*

*A) Eleanor (\$10) B) Elizabeth Bracelet (\$16)*

*C) Evie Bracelet (\$14)*



Simulated Diamond/Gold



Simulated Emerald/Gold



Simulated Pink Diamond/Gold



# EUGENIE

## PAVÉ TENNIS EARRINGS

Our Eugenie Pavé Tennis Earrings feature a gleaming bar of five hand-set 2mm simulated stones.

Simulated Emerald/Gold (EUGEE-GEM), Simulated Diamond/Gold (EUGEE-GCZ),  
Simulated Pink Diamond/Gold (EUGEE-GLP), Simulated Emerald/Silver (EUGEE-SEM),  
Simulated Diamond/Silver (EUGEE-SCZ), Simulated Pink Diamond/Silver (EUGEE-SLP) | \$10



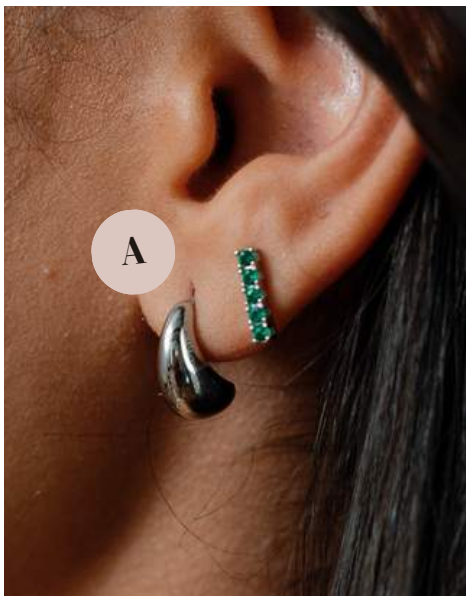
Simulated Emerald/Gold



Simulated Diamond/Gold



Simulated Pink Diamond/Gold

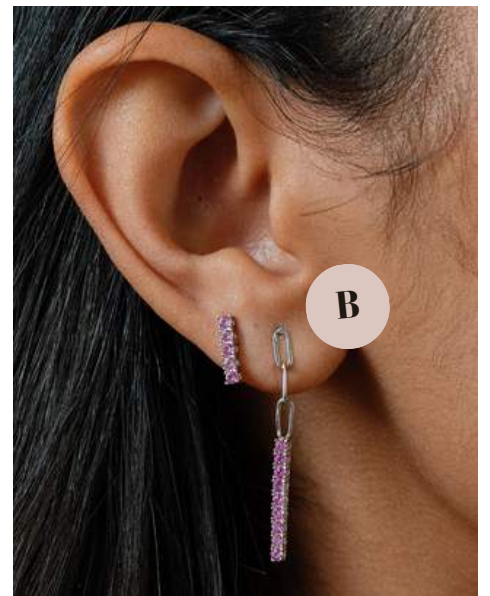


Simulated Emerald/Silver

Paired with : A) Jada Earrings (\$8)



Simulated Diamond/Silver



Simulated Pink Diamond/Silver

Paired with : B) Elizabeth Earrings (\$11)





# ELIZABETH

## PAVÉ TENNIS PAPERCLIP EARRINGS

Our Elizabeth Pavé Paperclip Earrings feature the best of both worlds:  
half classic tennis earring, half modern paperclip chain.

Simulated Emerald/Gold (ELIZA-GEM), Simulated Diamond/Gold (ELIZA-GCZ),  
Simulated Pink Diamond/Gold (ELIZA-GLP), Simulated Emerald/Silver (ELIZA-SEM),  
Simulated Diamond/Silver (ELIZA-SCZ), Simulated Pink Diamond/Silver (ELIZA-SLP) | \$11

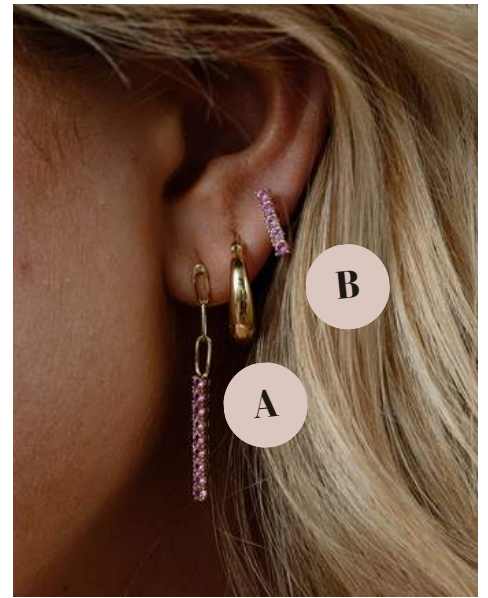
*Paired with : A) Jocelyn (\$8) B) Eugenie Earrings (\$11)*



Simulated Emerald/Gold



Simulated Diamond/Gold



Simulated Pink Diamond/Gold



Simulated Emerald/Silver



Simulated Diamond/Silver

*Paired with : C) Jada Earrings (\$8)*



Simulated Pink Diamond/Silver



# ELIZA

## PAVÉ HOOP EARRINGS

Our Elizabeth Pavé Paperclip Earrings feature the best of both worlds:  
half classic tennis earring, half modern paperclip chain.

Simulated Emerald/Gold (ELIZ-GEM), Simulated Diamond/Gold (ELIZ-GCZ),  
Simulated Pink Diamond/Gold (ELIZ-GLP), Simulated Emerald/Silver (ELIZ-SEM),  
Simulated Diamond/Silver (ELIZ-SCZ), Simulated Pink Diamond/Silver (ELIZ-SLP) | \$18

Paired with : A) Emerson (412) B) Eileen (48)



Simulated Emerald/Gold



Simulated Diamond/Gold



Simulated Pink Diamond/Gold



Simulated Emerald/Silver



Simulated Diamond/Silver



Simulated Pink Diamond/Silver



# EMERSON

## PAVÉ HUGGIE EARRINGS

Our Emerson Pavé Huggie Earrings sit close to your earlobe and showcase shining pavé stones, the perfect size and shape for earring stacks.

Simulated Emerald/Gold (EMER-GEM), Simulated Diamond/Gold (EMER-GCZ),  
Simulated Pink Diamond/Gold (EMER-GLP), Simulated Emerald/Silver (EMER-SEM),  
Simulated Diamond/Silver (EMER-SCZ), Simulated Pink Diamond/Silver (EMER-SLP) | \$12

*Paired with : A) Eliza (418) B) Eileen (48)*



Simulated Emerald/Gold



Simulated Diamond/Gold



Simulated Pink Diamond/Gold



Simulated Emerald/Silver



Simulated Diamond/Silver



Simulated Pink Diamond/Silver



# EILEEN

## PAVÉ EAR CUFF

Graceful pavé stones accent our Eileen Pavé Ear Cuff, the perfect accent for your daily carring stack with no extra piercing required.

Simulated Emerald/Gold (EILE-GEM), Simulated Diamond/Gold (EILE-GCZ), Simulated Pink Diamond/Gold (EILE-GLP), Simulated Emerald/Silver (EILE-SEM), Simulated Diamond/Silver (EILE-SCZ), Simulated Pink Diamond/Silver (EILE-SLP) | \$8

Paired with : A) Eliza (418) B) Emerson(\$12)



Simulated Emerald/Gold



Simulated Diamond/Gold



Simulated Pink Diamond/Gold



Simulated Emerald/Silver



Simulated Diamond/Silver



Simulated Pink Diamond/Silver



# PEARL JEWELRY



Elevate your everyday style with our new pearl jewelry collection, which includes stunning necklaces, earrings, and bracelets crafted with lustrous freshwater pearls. Each piece is designed to effortlessly mix and match with our stackable jewelry styles.



# PHOEBE

## PEARL EARRINGS

Elevate your earring collection with our Phoebe Pearl Earrings, featuring a small hoop of freshwater pearls that are easy to stack with a variety of earrings.

Gold (PHOE-GO) | \$13



Paired with: A) Jocelyn Earrings (\$8)  
B) Jackie Ear Cuff (\$7)

# PAULETTE

## PEARL CHAIN EARRINGS

Our Paulette Pearl Chain Earrings are a refreshed way to wear classic pearls, featuring a delicate chain drop that can be worn alone or stacked with other earrings.

Gold (PAUL-GO) | \$11



Paired with: C) Elizabeth Earrings (\$11)



# PIPPA

## PEARL BRACELET

A string of freshwater pearls adorns the Pippa Pearl Bracelet, a gorgeous piece to stack with our other pearl or pavé bracelet styles.

Gold (PIPP-PG) | \$16



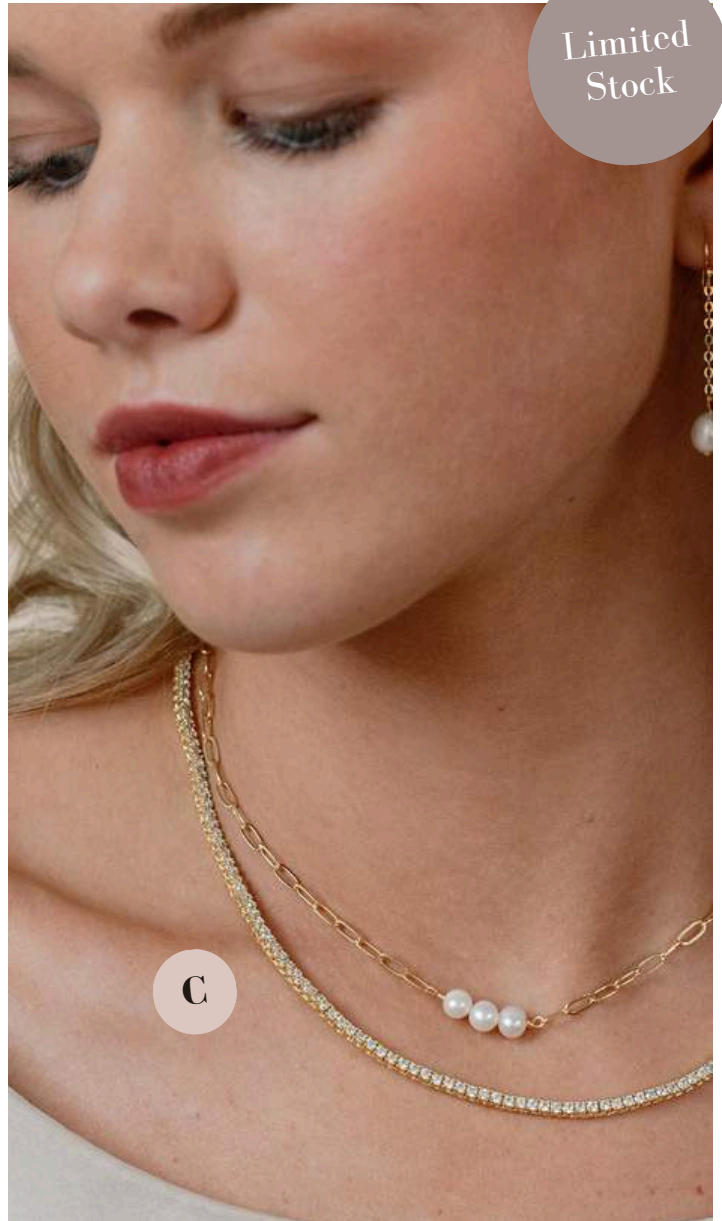
*Paired with: A) Eleanor Bracelet (\$10)  
B) Evie Bracelet (\$14)*

# PAMELA

## PEARL PAPERCLIP NECKLACE

Three freshwater pearls hang at the center of a delicate chain on our Eleanor Pavé Chain Necklace, designed to stack.

Gold (PAIG-PG) | \$14



*Paired with: C) Eugenie Necklace (\$39)*



# METAL JEWELRY



Our metal jewelry assortment is a harmonious blend of sophistication and simplicity, designed for effortless stacking with our pavé and pearl pieces. Our minimalist silver and gold toned necklaces, bracelets, and earrings infuse casual elegance into your everyday jewelry collection.





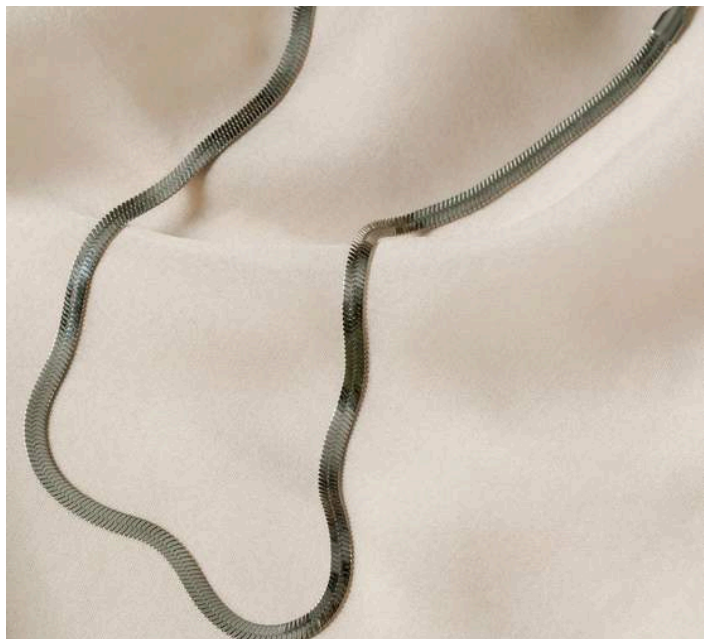


# ROSALIND

## HERRINGBONE NECKLACE

The Rosalind necklace boasts a delicate herringbone chain, versatile enough to stack with a variety of necklaces.

Gold (ROSA-GO), Silver (ROSA-SI) | \$14



# EVA

## PAPERCLIP NECKLACE

Our Eva necklace gleams in a paperclip chain, falling at the perfect length to stack with other necklaces.

Gold (EVA-GO), Silver (EVA-SI) | \$14



# ASTRID

## WATCH BAND BRACELET

Our Astrid Watch Band Bracelet brings the classic look of your favorite linked band, which is sure to set your bracelet stack apart.

Gold (ASTR-GO), Silver (ASTR-SI) | \$18



# ALLIE

## BANGLE BRACELET

Simplicity is key when you don our Allie Bangle Bracelet, a minimalist bangle that will balance your bracelet stack.

Gold (ALLI-GO), Silver (ALLI-SI) | \$17



Paired with: *A) Elizabeth Bracelet (416) B) Evie Bracelet (\$14) C) Emily Bangle (\$18)*



# ALICE

## PAPERCLIP BRACELET

Designed to wear with our metal, pavé, and pearl bracelet styles, the Alice paperclip chain bracelet offers just the right modern touch.

Gold (ALIC-GO), Silver (ALIC-SI) | \$9



# EMMA

## BOX CHAIN BRACELET

The Emma cord chain bracelet will perfectly complement any stack of bracelets.

Gold (EMMA-GO), Silver (EMMA-SI) | \$9



Paired with: A) Athena (\$18) B) Eugenie (\$24) C) Grace (\$18) D) Emma (\$9)



# GRACE

## BANGLE BRACELET

Mother of Pearl and simulated diamond pavés adorn the Grace bangle bracelet, which can be worn alone or in a bracelet stack.

Gold (GRAC-GO), Silver (GRAC-SI) | \$18



# ATHENA

## BANGLE BRACELET

Add subtle sophistication to your bracelet stack with the Athena embellished bangle.

Gold (ATHE-GO), Silver (ATHE-SI) | \$18



# JACKIE

## EAR CUFF

The Jackie Ear Cuff shines in gleaming metal, perfect for bringing casual elegance to your earring stack with no extra piercing required.

Gold (JACK-GO), Silver (JACK-SI) | \$7



# JOCELYN

## HUGGIE EARRINGS

Less is more when you wear our Jocelyn Huggie Earrings, with curves that sit close to the earlobe and balance any earring stack.

Gold (JOCE-GO), Silver (JOCE-SI) | \$8



*Paired with: A) Jackie (\$7) B) Eugenie (\$10)*



# JADA

## BEAN EARRINGS

Our showstopping Jada Bean Earrings are poised to become a staple in your jewelry collection, ideal for everyday earring stacks.

Gold (JADA-GO), Silver (JADA-SI) | \$8



# JOLIE

## CROISSANT HOOP EARRINGS

What's classic is fresh again in our Jolie Croissant Hoop Earrings, featuring a vintage shape that stacks seamlessly with your everyday earring collection.

Gold (JOLI-GO), Silver (JOLI-SI) | \$9



# YOUR DAILY STATEMENT



Our statement necklaces effortlessly elevate any outfit.  
Each piece showcases a unique combination of metal and stone  
that make a lasting impression.







# SYDNEY

## CIRCLE PEARL NECKLACE

The Sydney circle necklace features interesting geometry and beaded charms that add the finishing touch to your look.

Gold (SYDN-GO), Silver (SYDN-SI) | \$29



# SELENA

## CIRCLE BEADED NECKLACE

Our Selena necklace puts a metal circle on display with round beads that accent the neckline.

Onyx/Gold (SELE-GO), Beige/Gold (SELE-BE), Onyx/Silver (SELE-SO),  
Amazonite/Silver (SELE-AS), Amazonite/Gold (SELE-AG) | \$18



# CHRISTINA

## LARIAT NECKLACE

The Christina lariat necklace offers delicate beads strung on metal chain, a metallic circle to loop through, and multiple styling options.

Pyrite (CHRI-PY), Moonstone (CHRI-MO) | \$30





# COBBLESTONE *living*

## ORDERING INFORMATION

Retailers may order online at  
[cobblestonewholesale.com](http://cobblestonewholesale.com)  
or email orders to  
[orders@cobblestone-living.com](mailto:orders@cobblestone-living.com)

Initial order \$400

Reorder \$150

Minimum quantity: 2

## CARE INSTRUCTIONS

Avoid water, soap, and harsh  
chemicals. Clean using a dry soft  
cloth.. [Click here](#) for more details.

## COBBLESTONE LIVING

[cobblestonewholesale.com](http://cobblestonewholesale.com)

844.232.4363

312 Business Center Drive  
St. Simons, Georgia 31522

@cobblestoneliving

