

COBBLESTONE

living

autumn

ELEGANCE



FALL



2024

FALL 2024



Step into a world of enchantment with our Fall 2024 collection—inspired by our travels, made in Italy, and designed for elegant adventures. Explore new additions to our beloved mix-and-match knitwear assortment, now in an extended array of rich fall colors and fresh silhouettes.

Discover the effortless charm of our romantic styles, including our best-selling Fab Four silks and new tops that epitomize timeless sophistication. Complete your ensemble with our premium Italian leather handbags, featuring new tote and hands-free designs in autumn hues, ready for wherever your wanderlust takes you.



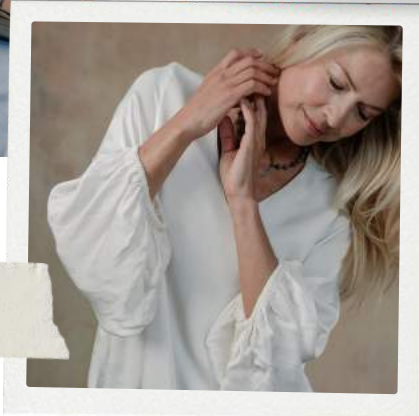
sumptuous
silks



espresso
& sage



elevated
classics



buttery
knits



made in
Italy



BUTTERY KNITS



Embrace the season with our buttery soft knitwear, designed to mix-and-match or pair monochromatically. Now available in a wide array of rich fall colors, these pieces feature cozy new silhouettes alongside our fan-favorite styles, perfect for any elegant adventure.





CLAUDIA

V-NECK SWEATER

Indulge in cozy elegance with our Claudia V-Neck Sweater, crafted from irresistibly soft knit fabric that feels like a dream. This fan-favorite piece features a flattering neckline and high-low hem, creating a drapey silhouette that pairs beautifully with our Cleo Sweater Pants.

Black (CLAU-BL), Grey (CLAU-GR), Espresso (CLAU-ES), Ivory (CLAU-IV), Taupe (CLAU-TP)

One size fits most | \$40

BEST
SELLER



COLETTA

SHORT SLEEVE SWEATER

Coletta is crafted from our signature buttery-soft knit fabric, a go-to piece for moments of relaxed sophistication. It features a v-neck, short sleeves, and flattering silhouette that pairs perfectly with our Cleo Sweater Pants for a seamless blend of style and coziness.

Grey (COLE-GR), Ivory (COLE-IV), Taupe (COLE-TP)

One size fits most | \$38

NEW
STYLE



CLARA

TURTLENECK SWEATER

Discover the timeless allure of Clara, crafted from buttery-soft yarn that moves with grace. This flattering tunic exudes effortless elegance—whether you're savoring a quiet morning or enjoying a day out—and pairs perfectly with our Cleo Sweater Pants for a chic, cozy head-to-toe ensemble.

Espresso (CLAR-ES), Taupe (CLAR-TP), Ivory (CLAR-IV), Black (CLAR-BL)

One size fits most | \$40

BEST
SELLER



DANIELLA

BOATNECK SWEATER

Daniella offers the allure of timeless elegance, crafted from our sumptuous soft-as-butter fabric. It features a flattering boatneck, graceful high-low hem, and drapery fit. Pair Daniella with our coordinating Cleo Sweater Pants, and step into a world of refined romance and effortless style.

Grey (DANI-GR), Taupe (DANI-TP), Moss Green (DANI-MO)

One size fits most | \$39

NEW
STYLE



DEVYN

SWEATER VEST

Elevate your layering game with Devyn, a versatile essential that adds a touch of charm to any outfit. A lightweight cami, collared shirt, or romantic blouse would benefit from this essential topper, designed to mix-and-match with our coordinating knitwear.

Espresso (DEVY-ES), Grey (DEVY-GR), Taupe (DEVY-TP)

One size fits most | \$39



CLEO

SWEATER PANTS

Enjoy unparalleled comfort and effortless style with Cleo. These wide-leg wonders offer a flattering fit that moves with you, perfect for transitioning between seasons and a wardrobe staple. Pair them with our coordinating knit tops and outerwear for stunning head-to-toe looks.

Taupe (CLEO-TP), Ivory (CLEO-IV), Espresso (CLEO-ES), Grey (CLEO-GR), Black (CLEO-BL)

One size fits most | \$42

BEST
SELLER



BLYTHE

SWEATER VEST

Shake up your fall wardrobe with the Blythe Sweater Vest. Featuring a boat neck and open sides with ties, Blythe will inspire you to explore endless layering possibilities. Pair this versatile piece with our best-selling Remi Shirt or our new Rosa Satin Shirt.

Taupe (BLYT-TP), Espresso (BLYT-ES), Beige (BLYT-BE)

One size fits most | \$44

BEST
SELLER



CARMEN

SHORT SLEEVE SWEATER

Timeless charm is at your fingertips when you reach for Carmen, which is bound to become a staple in your wardrobe. Its flattering cut and elbow-length sleeves add refined simplicity to any ensemble. Top off your favorite pants or pair it with our Madelyn Silk Pants.

Sage (CARM-SG), Heather Grey (CARM-HG), Ivory (CARM-IV)

One size fits most | \$42



EXQUISITE SILKS & BLENDS



Discover the timeless elegance of our romantic styles, including our tried-and-true Fab Four silks designed for head-to-toe luxury.

Our new feminine tops harken back to our roots, effortlessly elevating any wardrobe with polished sophistication.





ROSA

SATIN SHIRT

Experience the luxurious allure of Rosa, a stunning new addition that reimagines the beloved Remi Shirt in sumptuous satin. This exquisite piece features a silky drape and elegant dolman sleeves that can be styled in myriad ways—a staple when your wardrobe craves effortless romance.

Espresso (ROSA-ES), Moss Green (ROSA-MG), Camel (ROSA-CA), White (ROSA-WH)

One size fits most | \$46



VITTORIA

TOP

Vittoria is a showpiece of refined elegance and timeless charm. This exquisite top features an effortless cut that drapes with sophisticated ease. The bracelet-length pleated sleeves add a touch of romance, ideal for both daytime sophistication and evening allure.

Taupe (VITT-TP), Dark Grey (VITT-DG)

One size fits most | \$42

NEW
STYLE



GIADA

TOP

Giada is a poetic blend of elegance and ease that will captivate your senses. This tunic features a graciously gathered neckline, evoking timeless romance with every fold. Its drapery fit flows effortlessly, creating a flattering silhouette—your new go-to piece to complete a graceful look.

Black (GIAD-BL), Taupe (GIAD-TP), Ivory (GIAD-IV)

One size fits most | \$39



CASSANDRA

SILK TOP

Our iconic Cassandra Silk Top is the pièce de résistance that started it all. This original best-seller boasts a luxurious silk georgette overlay and a universally flattering fit with everyday charm. Pair with our Madelyn pants for an elegant head-to-toe ensemble.

Sage (CASS-SG), Ecrú (CASS-EC), Taupe (CASS-TP), Pearl Grey (CASS-PG),
Espresso (CASS-ES), Black (CASS-BL) | One size fits most | \$39

BEST
SELLER



MADELYN

SILK PANTS

You'll swoon over Madelyn, where luxurious Italian silk meets impeccable design. They feature a comfortable waistband and a flattering wide-leg cut. Offered in stunning colorways that coordinate with our silk tops and cozy knitwear, the Madelyn Pants make getting dressed an art form.

Pearl Grey (MADE-PG), Espresso (MADE-ES), Sage Green (MADE-SG), Taupe (MADE-TP), Ecu (MADE-EC). Black (MADE-BL) | One size fits most | \$40



NEW
COLORS



MARTINA

SILK TOP

Our Martina is an ode to grace. With delicate silk layers and an eye-catching asymmetrical hemline, it offers a breezy, feminine look that's both effortless and elegant. For a brilliant head-to-toe ensemble, match it with our Madelyn Silk Pants and step into a world of timeless allure.

Espresso (MART-ES), Sage Green (MART-SG), Taupe (MART-TP), Pearl Grey (MART-PG),
Black (MART-BL), Ecru (MART-EC) | One size fits most | \$39



MARIANNA

SILK TOP

The sleeveless Marianna is a masterpiece of elegance and style. This top features luxurious silk layers that drape beautifully, highlighted by a chic asymmetrical hemline. Pair it with our Madelyn Silk Pants and experience a chic head-to-toe look that exudes effortless glamour.

Ecru (MADE-EC). Espresso (MADE-ES), Pearl Grey (MADE-PG),
Black (MADE-BL), Sage Green (MADE-SG) | One size fits most | \$36

BEST
SELLER



VIVIEN

SATIN TOP

Embrace timeless elegance with Vivien, where classic style meets romantic allure. Crafted from luxe satin, it features breathtaking sleeves that add a touch of drama worn on its own or under our Renata Wrap. This enchanting top is sure to accompany your most memorable moments.

Champagne (VIVI-CH), Moss Green (VIVI-MO), Ivory (VIVI-IV)

One size fit most | \$44

NEW
STYLE



REMI

SHIRT

Step into the effortless charm of the Remi Shirt, a timeless wardrobe staple that takes the classic collared shirt to new heights. With its soft drape and graceful dolman sleeves, this piece is versatile enough to style in countless ways and promises to be your go-to choice for any occasion.

Taupe (REMI-TP), White (REMI-WH), Sage (REMI-SG), Black (REMI-BL)

One size fits most | \$38

BEST
SELLER



DOLCE FAR NIENTE

GRAPHIC TEE

Embrace the "sweetness of doing nothing" in our Dolce Far Niente Graphic Tee, cut from supersoft Italian cotton in a feminine shape with details like a raw-edge boat neck, cap sleeves, and shirttail hem.

DOLC-S, DOLC-M, DOLC-L, DOLC-XL
Small, Medium, Large, X-Large | \$20



ITALIAN HANDBAGS



Complete your look with our premium Italian leather handbags, featuring new tote and hands-free styles in gorgeous autumn hues. Crafted with impeccable artisanship, these bags blend practicality with timeless elegance to accompany you on every journey.





GIANNA

LEATHER TOTE BAG

Strikingly sophisticated Gianna is crafted from premium vintaged Italian leather that exudes timeless allure. Each piece is a testament to our enduring passion for travel, designed to complement every journey. Available in rich seasonal colors, Gianna is more than just an accessory—it's a statement piece that completes your look with effortless elegance.

Marble (GIAN-MA, pictured), Camel (GIAN-CA) | \$80



NEW
STYLE



GIA

HOBO TOTE BAG

Wanderlust comes to life in the Gia Hobo Tote Bag, a perfect blend of boho chic and classic sophistication. Inspired by our passion for travel and crafted from genuine Italian pebbled leather, it captures the essence of carefree exploration and timeless style.

Black (GIA-BL, pictured), Espresso (GIA-ES), Taupe (GIA-TP) | \$68

NEW
STYLE



BRIA

TEDDY SLING BAG

Embark on your next adventure with Bria, where luxurious comfort meets timeless style. Inspired by our love of travel, this bag boasts a cozy faux shearling texture and a matching pebbled Italian leather strap. Whether you're strolling through bustling streets or exploring quaint countryside paths, Bria is the perfect companion for every journey.

Black (BRIA-BL), Taupe (BRIA-TP), Ecru (BRIA-EC) | \$39

BEST
SELLER

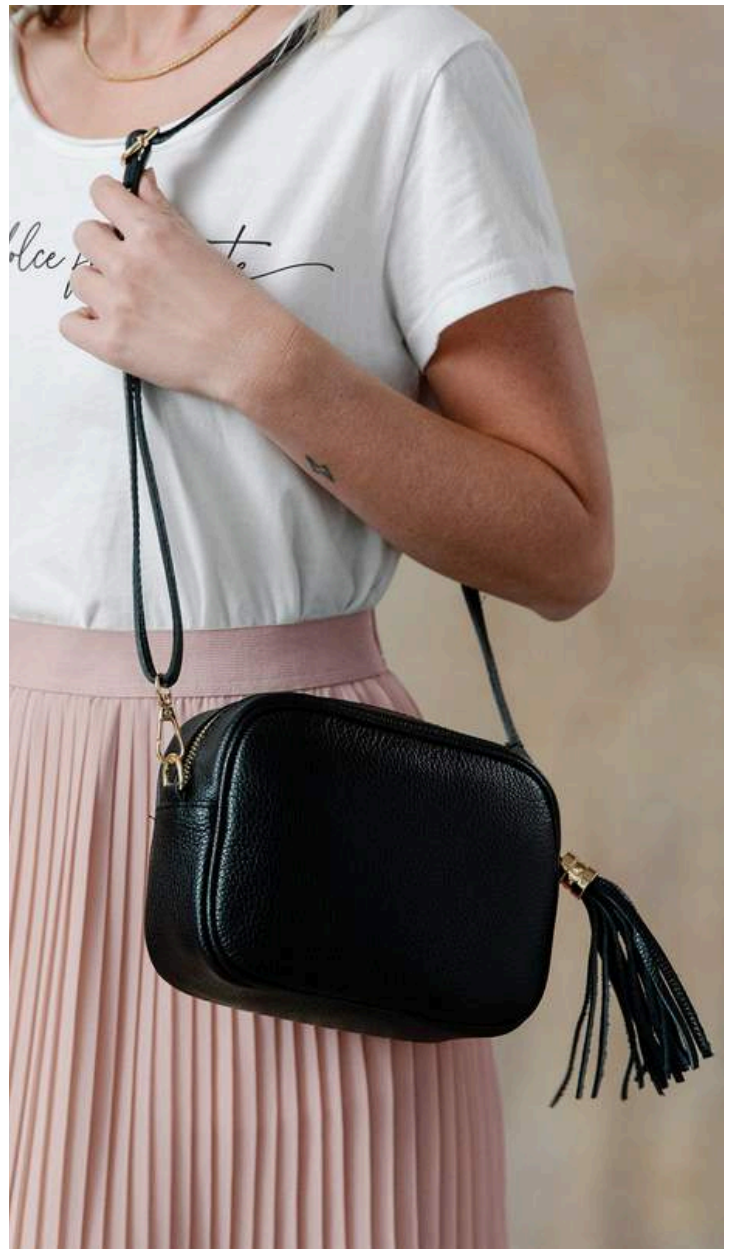


MARGARITE

LEATHER CAMERA BAG

The Margarite Leather Camera Bag is a testament to our passion for travel and exploration. Crafted from genuine Italian pebbled leather, this style invites you to capture each moment on the move, from everyday adventures to vibrant new destinations.

Taupe (MARG-TP), Black (MARG-BL) | \$42



LINA

LEATHER SLING BAG

Discover the essence of hands-free elegance with Lina, a testament to timeless style and wanderlust-inspired design. Crafted from genuine Italian pebbled leather with a matching adjustable strap, each bag embodies the artistry and craftsmanship of our travels.

Coordinates with our patterned Bag Straps for extra versatility.

Ecru (LINA-EC), Taupe (LINA-TA), Blush (LINA-BLS), Black (LINA-BL) | \$39



BEST
SELLER



KATERINA

LEATHER SLING BAG

Katerina embodies hands-free elegance, where luxurious Italian embossed leather meets timeless design. Each bag captures the essence of wanderlust with its faux woven texture, reminiscent of charming markets and faraway destinations. Complete with a matching leather strap, this bag offers both practicality and sophistication to every adventure.

Fawn (KATE-FW), Blush (KATE-BLS), Black (KATE-BL) | \$44



CHLOE

BAG STRAP

Our patterned Clara bag straps are designed to mix and match with our hands-free bag assortment. *Sling bags sold separately.*

Taupe (CARL-TP), Black (CARL-BL),
Ecru (CARL-EC), Blush (CARL-BLS) | \$18



CARLA

BAG STRAP

Add extra versatility to our hands-free sling bags with the patterned Catalina Bag Strap. *Sling bags sold separately.*

Black (CHLO-BL), Taupe (CHLO-TP),
Blush (CHLO-BLS) | \$13



CLARICE

BAG STRAP

Our patterned Clarice bag strap adds extra texture and versatility to our Italian hands-free bags. *Sling bags sold separately.*

Taupe (CLAR-BLS) | \$14



CATALINA

BAG STRAP

Add texture and shine to our hands-free sling bags with the striped Catalina Bag Strap. *Sling bags sold separately.*

Ecru/Silver (CATA-SI) | \$14





COBBLESTONE *living*

ORDERING INFO

Retailers may order online at
cobblestonewholesale.com
or email orders to
orders@cobblestone-living.com

Initial order \$500

Reorder \$150

Minimum quantity: 2

CARE INSTRUCTIONS

Hand wash cold, lay flat to dry.

COBBLESTONE LIVING

cobblestonewholesale.com

844.232.4363

312 Business Center Drive
St. Simons, Georgia 31522

@cobblestoneliving

